

THE SCIENTIFIC CENTER OF KUWAIT

SALAH BEHBEHANI

المركز العلمي
THE SCIENTIFIC CENTER



www.tsck.org.kw

TEXT DRIVEN

LAYOUT

Lorem dolor sit amet,
consectetur ipsum adipiscing
elit, sed do eiusmod tempor
incididunt.







WHO DO WE VISIT?

Schools

Environmental Institute Staff

Workshops and Exhibitions

WHY WE KNOW WHAT WE ARE DOING?

Visiting the place (school)

Asking what the subject is about

Live animals demonstration



METHODS USED

Typical methods

Psychology

Tricks

Touching and feeling (live animals)

**IF YOU
CANT FIND
A WAY**



**CREATE
ONE!**





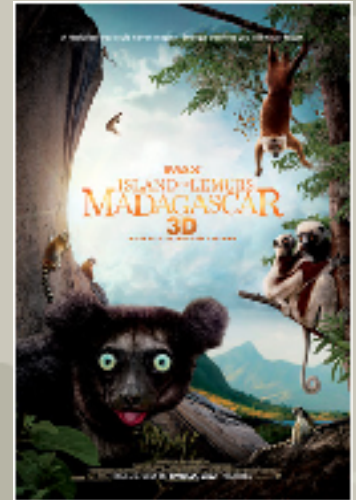








IMAX MOVIES







A BRAVE SNAKE SAVING A FISH FROM DROWNING

A photograph of a gecko in a terrarium. The gecko is positioned in the lower half of the frame, facing right. It has a mottled pattern of dark spots on its light-colored body. The background is a wire mesh enclosure with some blurred lights. The text "WHEN YOU EDUCATE" is written in large, white, bold, sans-serif capital letters across the middle of the image.

WHEN YOU EDUCATE

THANK YOU