



escola.cienciaviva.pt



MUSEUM - SCHOOLS

Deepening the education mission of museums and science centres

*"Museum-school refers to a school resulting from a partnership between a **museum** and **school district** or **school**"*

(2001, Klein, C. & Corse, J., A Museum School: Building Grounded Theory as Two Cultures Meet)



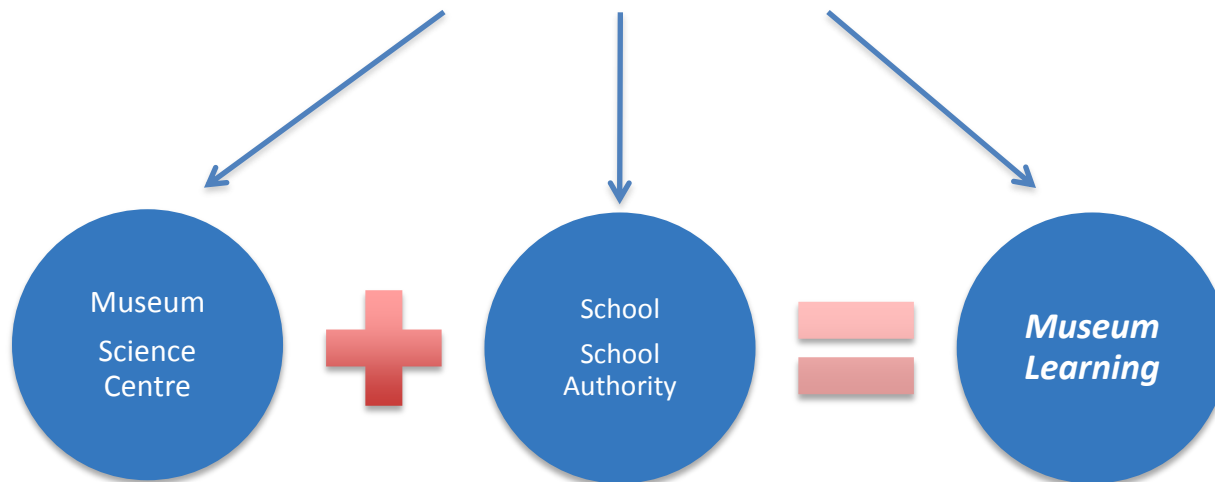
A large scope of definition

a **School in a Museum**



a **Museum in a School**

A partnership **School - Museum**



The partners cooperate to develop a museum learning program



PAVILHÃO DO
CONHECIMENTO
CIÊNCIA VIVA



AGÊNCIA NACIONAL
PARA A CULTURA
CIENTÍFICA E TECNOLÓGICA



MUSEUM - SCHOOLS

International references and inspiration



PAVILHÃO DO
CONHECIMENTO
CIÊNCIA VIVA



AGÊNCIA NACIONAL
PARA A CULTURA
CIENTÍFICA E TECNOLÓGICA



Dr. Theodore T. Alexander, Jr. Science Center School

A partnership with the California Science Center

sciencecenterschool.com

Los Angeles | Opened in 2004

A partnership between

- California Science Center
- Los Angeles Unified School District
- University of Southern California





PAVILHÃO DO
CONHECIMENTO
CIÊNCIA VIVA



AGÊNCIA NACIONAL
PARA A CULTURA
CIENTÍFICA E TECNOLÓGICA



Museum Magnet Elementary School Science Museum of Minnesota

www.museummagnet.com/

Students:

- Actively engage and interact with various museums, cultural institutions, and the performing arts
- become “museum researchers”, using museum resources to understand the curriculum
- Visually display work in a museum-like way that explicitly illustrates knowledge, skills, including writing for a museum audience



PAVILHÃO DO
CONHECIMENTO
CIÊNCIA VIVA



AGÊNCIA NACIONAL
PARA A CULTURA
CIENTÍFICA E TECNOLÓGICA



CIENCIA VIVA SCHOOL

Pavilion of Knowledge Ciencia Viva

Lisbon | PORTUGAL





CIENCIA VIVA SCHOOL

*A museum-school community project,
to address **community needs**
in **science education** and scientific culture
for **primary school children**.*





A partnership between:

A Science Centre

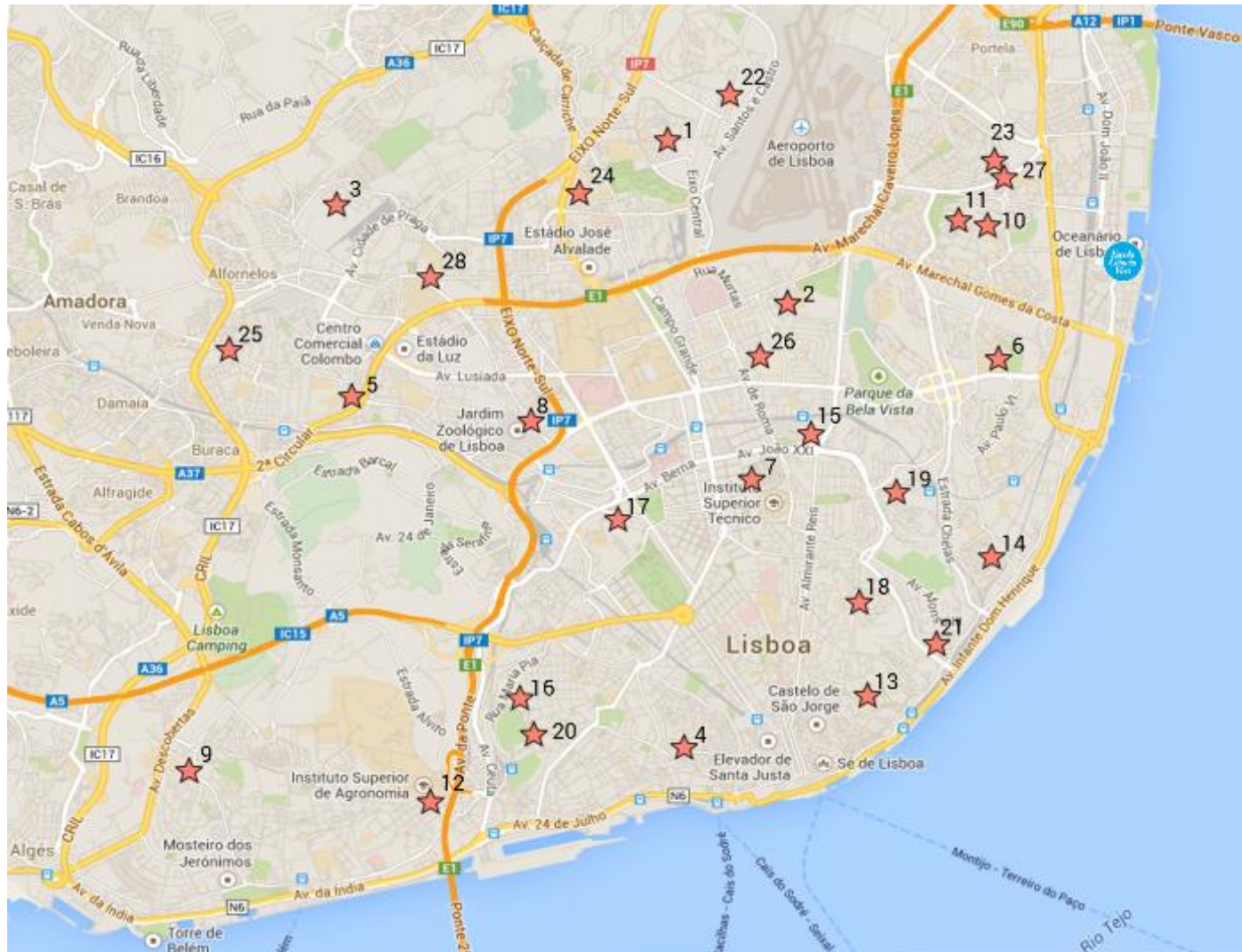
The Pavilion of Knowledge Ciencia Viva, the largest Science Centre in Portugal

The Municipality

The Lisbon Local Government, which provides school transport and meals

Primary Schools

Organized in a network of 28 school clusters across Lisbon



Lisbon Map (28 School Clusters)



A brief history ...

2010

The Pavilion of Knowledge Ciencia Viva, in Lisbon, builds a school infrastructure for children (6 to 10 years old), with 2 classrooms and other school facilities.

2011

The project starts with weekly classes for all the pupils of 3 primary schools located near the Pavilion of Knowledge.

2012

The project was extended to pupils from 28 school clusters in Lisbon.
Ciencia Viva School receives a world award from the Amgen Foundation and King Baudouin Foundation for Innovation in Science Education.

2014

The school was expanded to reach a community of 46 primary schools



Unique features ...

- Face-to-face interaction with scientists
- Focus on hands-on and inquiry learning
- Certified teacher training and professional development
- Co-teaching with museum educators
- Informal science learning environment
- Links with the scientific community and the university
- Participation in international programs and events



PAVILHÃO DO
CONHECIMENTO
CIÊNCIA VIVA



AGÊNCIA NACIONAL
PARA A CULTURA
CIENTÍFICA E TECNOLÓGICA

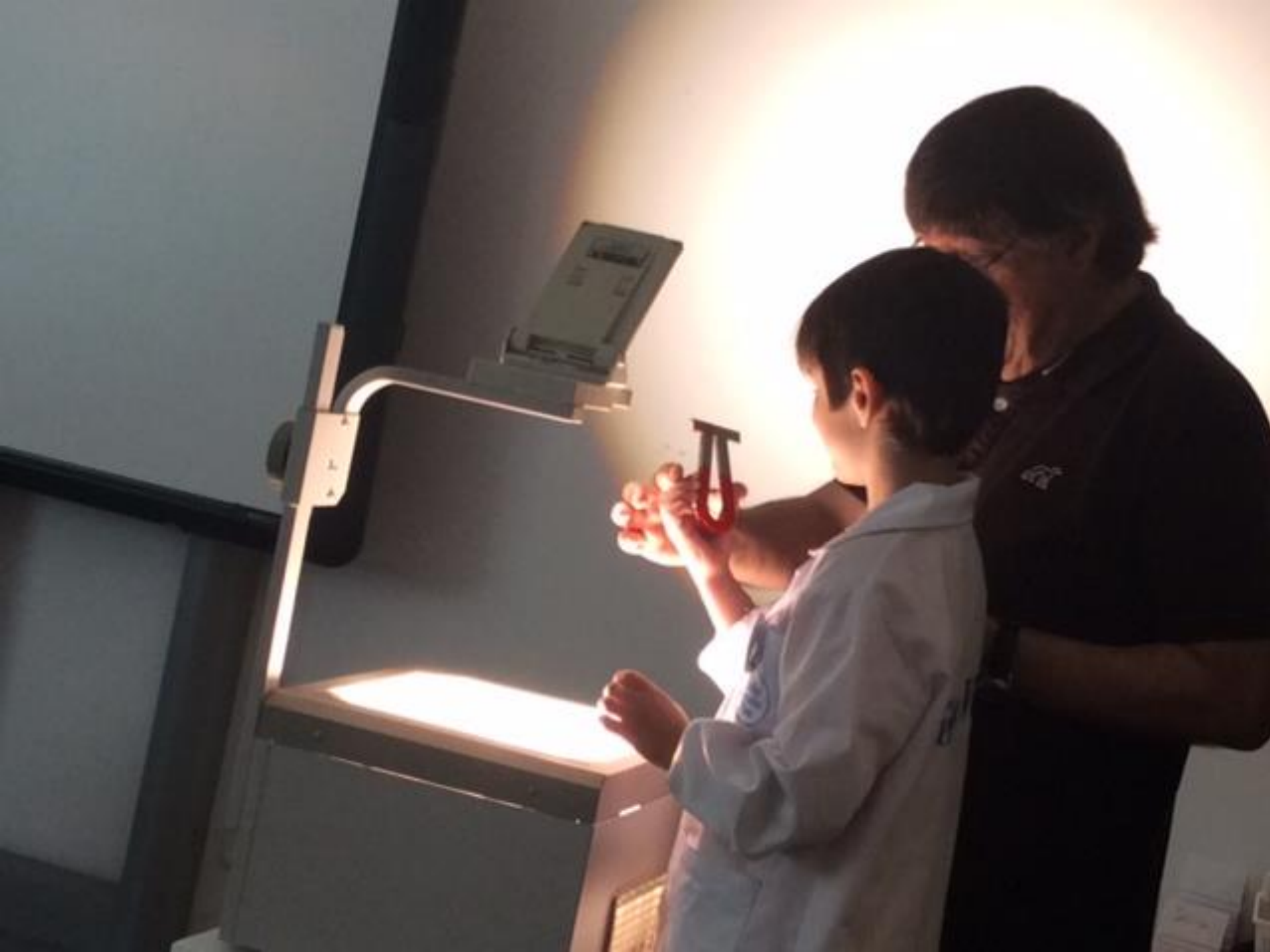


Face-to-face interaction with scientists



















PAVILHÃO DO
CONHECIMENTO
CIÊNCIA VIVA



AGÊNCIA NACIONAL
PARA A CULTURA
CIENTÍFICA E TECNOLÓGICA



Focus on hands-on and inquiry learning







PAVILHÃO DO
CONHECIMENTO
CIÊNCIA VIVA



AGÊNCIA NACIONAL
PARA A CULTURA
CIENTÍFICA E TECNOLÓGICA



Certified teacher training and professional development







PAVILHÃO DO
CONHECIMENTO
CIÊNCIA VIVA



AGÊNCIA NACIONAL
PARA A CULTURA
CIENTÍFICA E TECNOLÓGICA



Co-teaching with museum educators







PAVILHÃO DO
CONHECIMENTO
CIÊNCIA VIVA



AGÊNCIA NACIONAL
PARA A CULTURA
CIENTÍFICA E TECNOLÓGICA



Informal science learning environment





Ciência Viva



PAVILHÃO DO
CONHECIMENTO
CIÊNCIA VIVA



AGÊNCIA NACIONAL
PARA A CULTURA
CIENTÍFICA E TECNOLÓGICA



Links with the scientific community and the university







PAVILHÃO DO
CONHECIMENTO
CIÊNCIA VIVA



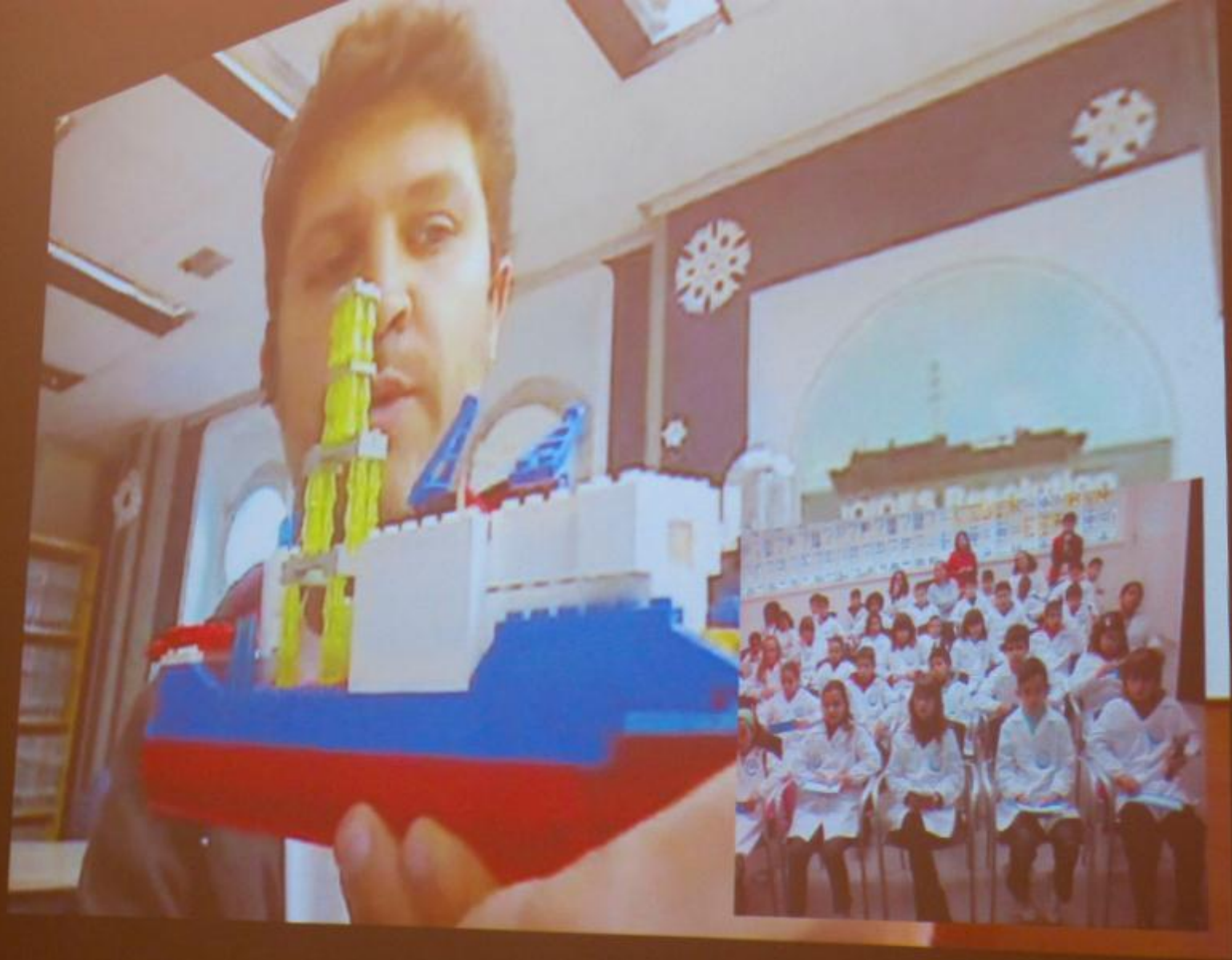
AGÊNCIA NACIONAL
PARA A CULTURA
CIENTÍFICA E TECNOLÓGICA



Participation in international programs and events









LEARNING IN A SCIENCE CENTRE



STRANDS OF INFORMAL SCIENCE LEARNING

Learning Science in informal Environments, National Research Council 2010



INTEREST | MOTIVATION | EXCITEMENT





PAVILHÃO DO
CONHECIMENTO
CIÊNCIA VIVA



AGÊNCIA NACIONAL
PARA A CULTURA
CIENTÍFICA E TECNOLÓGICA



THANK YOU
rvargas@cienciaviva.pt